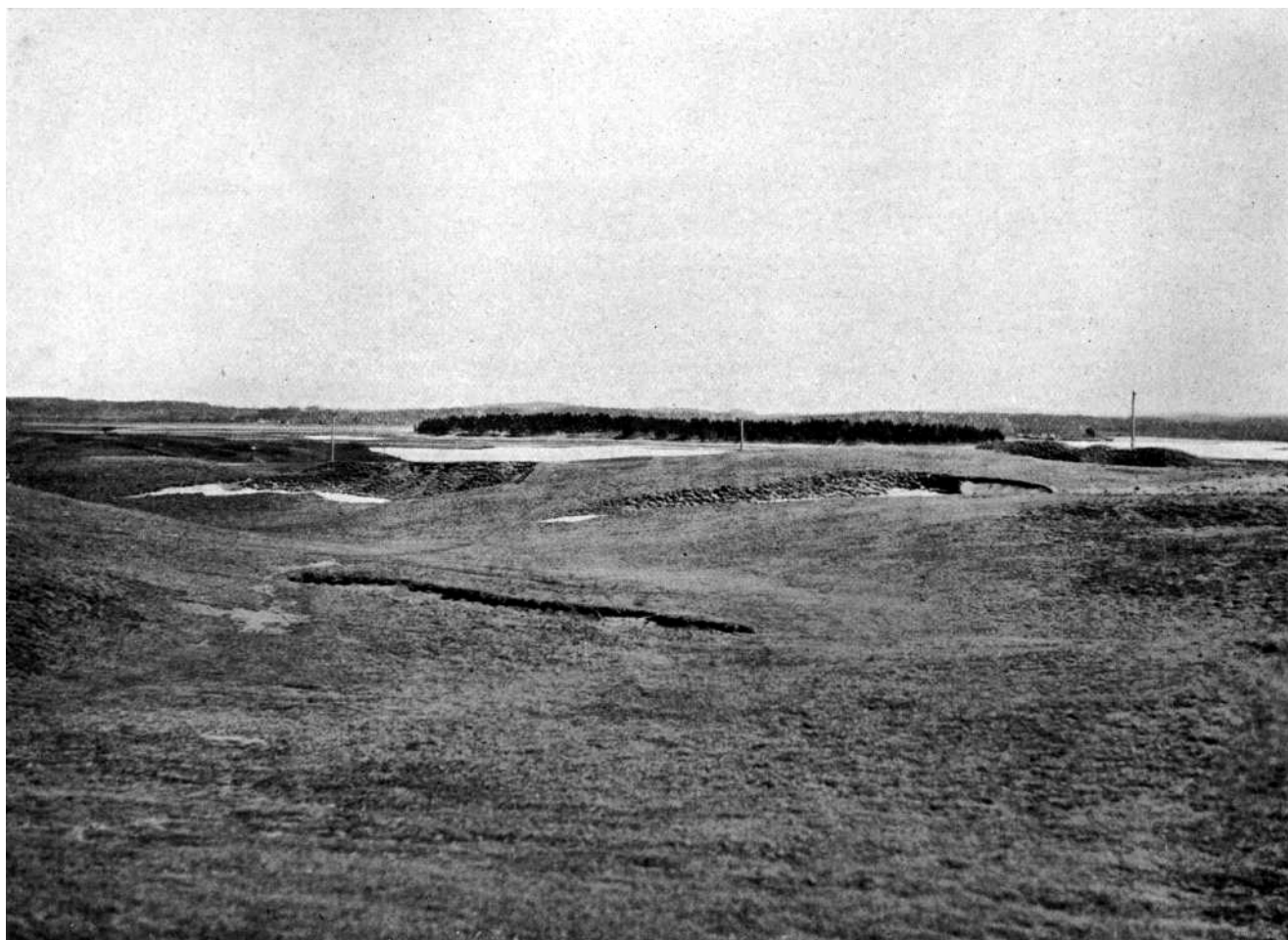


REDAN HOLE AT THE NATIONAL GOLF LINKS

By C. B. MACDONALD and H. J. WHIGHAM

TAKE a narrow tableland, tilt it a little from right to left, dig a deep bunker on the front side, approach it diagonally, and you have the Redan. At North Berwick, of course, all these things were done in the beginning by nature. The only original thing that the greenkeeper did was to

only determines the club to be chosen and the strength to be used, but also the direction and character of the stroke. The tableland is long and narrow; sloping from right to left; there is a deep bunker in front and a smaller bunker at the back. It would be almost impossible to drop the ball on the green near the



THE REDAN FROM THE TEE

The flag is located just beneath the left end of the cedar covered island in the middle distance

place the tee so that the shot had to be played cornerwise, so to speak, instead of directly down the tableland. And when you come to think of it that is the secret of most of the great holes all over the world. They all have some kind of a twist.

Said the North Berwick caddie to Mr. Macdonald when he was on the quest for ideal holes for the coming National Links "Here's the hole that makes a man think." Then he took a handful of grass and threw it in the air to see exactly in what direction the light breeze was blowing. For there are more ways of playing the Redan than any other short hole in existence. The force and direction of the wind not

flag and keep it there if the green were not banked a little beyond the hole. The distance is about 180 yards from the center of the tee. With a head wind or one coming a little from the left a wooden club may be used and the shot played straight at the flag; for then the ball will drop dead on the green. But it is a long carry over the deep bunker in the face of the green; and because the direction is diagonal the carry gets longer and longer to the left, so that the least bit of pull will put the ball into the bunker. With no wind at all the same kind of shot can be played with a mid-iron; but it must be a high shot

(Continued on page 52)

Redan
Green
180 yards

147 yards

Alps
Green

Hog's Back
Tee

120 yards

Redan
Tee



THE REDAN HOLE, 180 YARDS, NATIONAL GOLF LINKS
Surveyed and modelled by Oscar Smith, Jr., of F. S. Tainter & Co., 55 Wall Street, New York

THE REDAN HOLE

(Continued from page 20)

that will drop very dead, the most difficult stroke in golf. With any wind behind the direct attack becomes almost impossible; and then the player must aim for the right hand end of the green where he does not have to carry the deep bunker in the face. The ball landing on the high end of the tableland will break to the left, and will be kept going more to the left by the fact that the green is banked like a circular bicycle track; and so a shot played twenty yards or more to the right of the hole may end up within a foot of the flag. But it has to be played just right. The least bit of pull will take it into the bunker in front of the green, and the least slice will prevent it getting the break to the left and will carry it into the bunker beyond the green. With a strong wind behind the hole is still more difficult; for it must then be played with a very lofted club, or else with a running shot which must carry the large bunker to the right which as a rule hardly enters into one's calculations, and get pulled up on the side of the tableland. Either shot admits of all kinds of error.

The principle of the Redan can be used wherever a long narrow tableland can be found or made. Curiously enough the Redan existed at the National long before the links was thought of. It is a perfectly natural hole. The essential part, the tilted tableland was almost exactly like the North Berwick original. All that had to be done was to dig the bunker in the face, and place the tee properly. The National Redan is rather more difficult than the North Berwick hole, because the bunker at the back of the green is much deeper and more severe. Some people think the hole is too difficult altogether. But any one who gets a legitimate three there, especially in a medal round, is sure to say that it is the finest short hole in the world. There is no compromise about it. Whichever of the various methods of attack is chosen, the stroke must be bold, cleanly hit and deadly accurate. At the ordinary hole of 180 yards it is a very bad shot that does not stay on the green. At the Redan it takes an exceedingly good shot to stay anywhere on the green; and to get a putt for a two is something to brag about for a week.

There are several Redans to be found nowadays on American courses. There is a simplified Redan at Piping Rock, a reversed Redan at Merion Cricket Club (the green being approached from the left hand end of the tableland) and another reversed Redan at Sleepy Hollow where the tee instead of being about level with the green is much higher. A beautiful short hole with the Redan principle will be found on the new Philadelphia course at Pine Valley. Here also the tee is higher than the hole, so that the player overlooks the tableland. The principle can be used

(Continued on page 54)

THE REDAN HOLE

(Continued from page 52)

with an infinite number of variations on any course. In reality there are only about four or five kinds of good holes in golf. The local scenery supplies the variety. Here is one of the four or five perfect kinds. The principle of the Redan cannot be improved upon for a hole of 180 yards.